

# METALLIZED POLYPROPYLENE 3 PHASE POWER FACTOR CORRECTION CAPACITORS 240 - 600 AC

## CONSTRUCTION

The "FILMET" capacitor is constructed using low loss polypropylene film dielectric on which a thin layer of metal has been deposited to one side to serve as the electrode. The two sheets are displaced forming a low loss non-inductive (extended foil) capacitor. Both ends of the winding are spray-metallized to provide a means to attach the copper tabs. The tabs are then spotwelded to the rivet on the underside of the cover and the cover is sealed to the case by a double-lock roll seam. The unit is completely filled with LEKTROL, a non-PCB fluid which is biodegradable, low toxic, and environmentally compatible. The thin layer of metal which is deposited on the film dielectric not only replaces the conventional aluminum foil electrodes but is self-healing, resulting in higher operating voltages and longer life.

## CHARACTERISTICS

Polypropylene film is a low loss dielectric possessing high voltage stress capabilities. These characteristics allow the polypropylene "FILMET" capacitor to consume less energy and result in smaller physical size per volt-ampere than the all paper or film-paper capacitor.

## CASE RUPTURE PROTECTION

Since the non-PCB impregnant is a combustible liquid, RONKEN has incorporated into the capacitor cover assembly an internal pressure sensitive current interrupting device. This minimizes capacitor case rupture by reacting to the cover bulging. The cover bulges due to the pressure build-up caused by the gassing and excessive temperature associated with end of life capacitor failures. As the cover bulges, the pressure sensitive interrupter internally disconnects the capacitor terminals from the external power source. Therefore, it is necessary to allow a minimum of 1/2" clearance above the capacitor terminals for the cover to bulge. Use only flexible terminal leads - no buss bars.

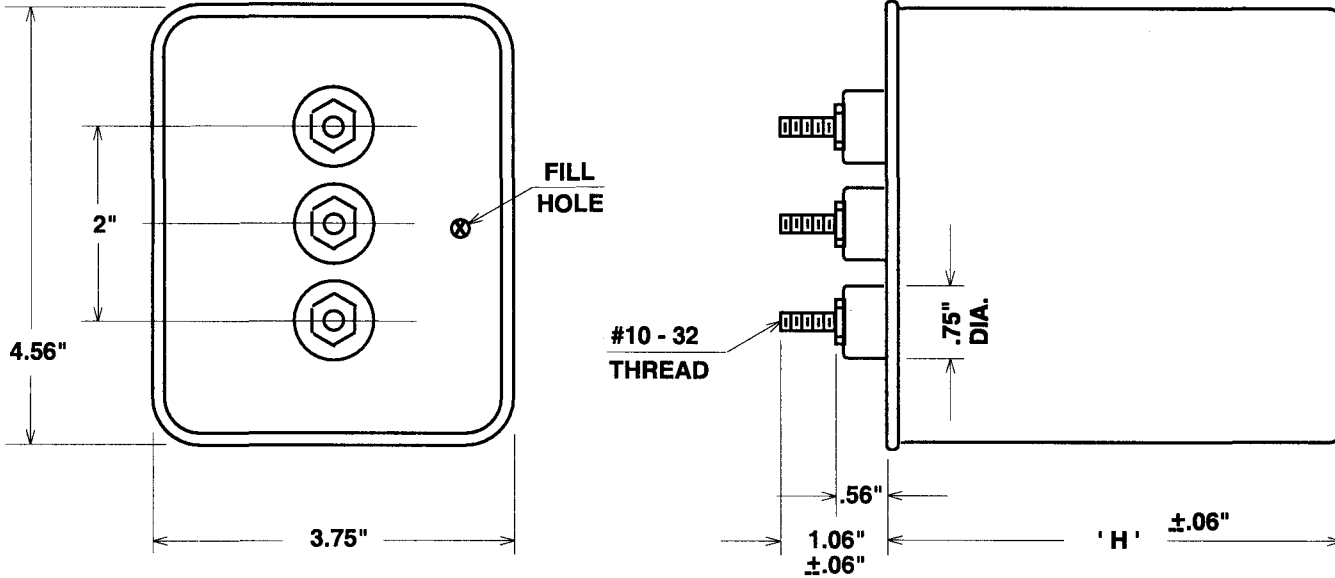
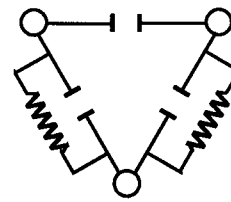
RONKEN capacitors incorporating the pressure sensitive interrupter are U.L. recognized under file #E78260.

## TEMPERATURE

The operating case temperature range is -40°C to +70°C.

**INK STAMP**

INTERNAL RESISTOR  
 15 IN. - LB. MAX. TORQUE  
 KVAR AC 60 HZ 3 PH.  
 RONKEN  
 PROTECTED 10000 AFC  
 NO PCB'S CONTAINS  
 FLAMMABLE FLUID  
 MADE IN U.S.A. DATE  
 CUST. P/N



KVAR + 15 % - 0 %	240 VAC 60 HZ 3 PH.		KVAR + 15 % - 0 %	480 VAC 60 HZ 3 PH.		600 VAC 60 HZ 3 PH.	
	PART NO.	' H '		PART NO.	' H '	PART NO.	' H '
2	P93F09205P89	3.88"	2	P93F17205P89	3.88"	P93F22205P89	3.88"
3	P93F09305P89	3.88"	3	P93F17305P89	3.88"	P93F22305P89	3.88"
4	P93F09405P89	4.25"	4	P93F17405P89	3.88"	P93F22405P89	3.88"
5	P93F09505P89	5.25"	5	P93F17505P89	3.88"	P93F22505P89	3.88"
6.25	P93F09635P89	6.25"	6	P93F17605P89	3.88"	P93F22605P89	3.88"
7.5	P93F09755P89	6.25"	7.5	P93F17755P89	3.88"	P93F22755P89	3.88"
8.3	P93F09835P89	6.25"	10	P93F17106P89	5.25"	P93F22106P89	5.25"
10	P93F09106P89	9.25"	12.5	P93F17136P89	5.25"	P93F22136P89	5.25"
12.5	P93F09136P89	9.25"	15	P93F17156P89	6.25"	P93F22156P89	6.25"
			16.7	P93F17176P89	6.25"	P93F22176P89	6.25"
			20	P93F17206P89	7"	P93F22206P89	7"
			22.5	P93F17236P89	9.25"	P93F22236P89	9.25"
			25	P93F17256P89	9.25"	P93F22256P89	9.25"

Consult factory for rating and sizes not listed.